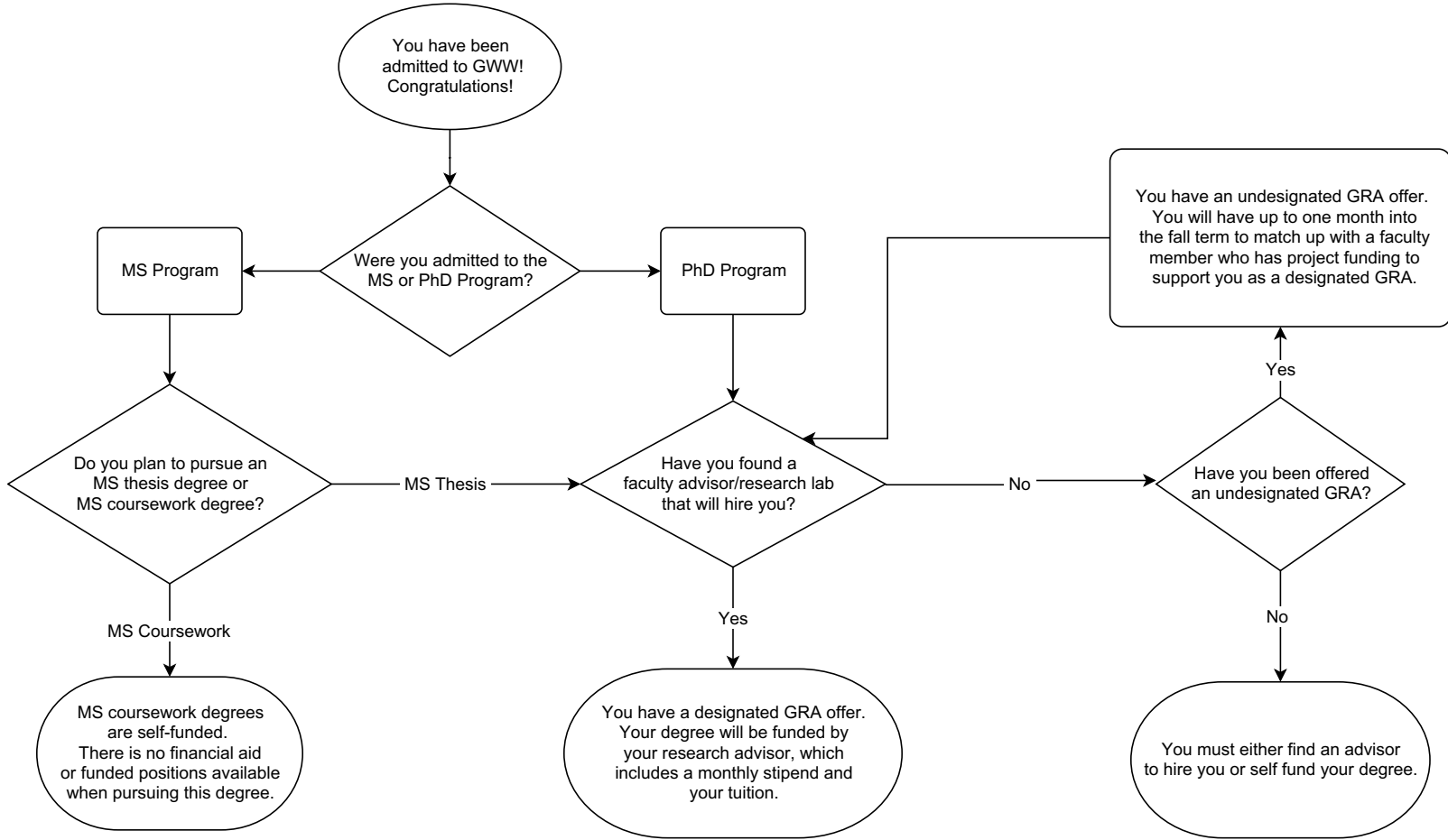


GWW School of Mechanical Engineering Graduate Funding Information



What can you do if your funding is running out or you need to self-fund?

Apply for Fellowships: <http://career.gatech.edu/about-fellowships>

Graduate Teaching Assistantship (GTA): Any student for whom the Woodruff School has made a financial commitment takes precedence for GTA, regardless of the student or faculty status. Students can potentially apply for a GTA to cover a semester gap in externally-supported graduate research assistantships or fellowships. *The Woodruff School does not use GTA assignments for long-term support.*

For more information on funding, please refer to the Graduate Handbook:
<https://www.me.gatech.edu/graduate/handbook/aid>